

Charlton Marshall News August 2008

Published by Charlton Marshall Parish Council

Clerk to the Council: Pam Higgins Tel. 488431. Editorial Matters: Mark Churchill Tel. 452872



Meet the Councillors.



Steve Weatherley-Barton, Ian Rodd (Chairman), Malcolm Presland, Karen Harper, Pam Higgins (Clerk), Enid Plant, Yvonne Powell. Absent: Terry Mole.

Remember Parish Council meets on the first Tuesday each month at 7.30pm. Any Parishioner can attend and during the open forum can ask a question or raise a concern. Also you can meet Pam at the Church Room/Post Office most Thursday mornings.

Do you like walking locally in the countryside. If so the Parish Council would like to hear from you via the Clerk; perhaps you could keep us up to date on the state of footpaths in the parish.

Charlton Marshall Youth Bus

For several months a rather battered minibus has been appearing in Charlton Marshall on Thursday (or more recently Wednesday) nights. Those who have dared to take a closer look will have found in or around it youth workers Sue and Tom, and a bunch of young people from the village - and what a great bunch of young people they are.

In early July Parish Council Chairman Ian Rodd presented certificates to many of them, in recognition of their achievements in the past year. If this work is to continue (with or without the bus!), funding will have to be generated and more helpers will be needed.

This work has made a real impact on the lives of these young people, and on the quality of life in Charlton Marshall. If it doesn't continue we shall all be losers.

Steve Weatherly-Barton: 480227.

Pam reflects on her first year as Clerk.

Pam took on the job from May 1st 2007; she is contracted for 30 hours a month which if you want to break it down is about a day a week or an hour a day.

I asked her about highlights and lowlights. The highlight is definitely the Youth Bus; Pam got funding from the housing association and feels this is a real achievement from the Parish Plan. The low point is the ongoing issues with the Oak Crest development.

In spite of her years as a parish councillor she found there was more to the Clerk's job than she realised but it is very interesting due to the sheer variety of tasks e.g. arranging grass cutting for play area, cemeteries, Gravel Lane and Riverside Gardens, keeping burial records, paying bills and taking in money, implementing decisions of the Parish Council, attending courses and briefing the councillors as a result etc. etc. Can she keep it down to the 30 hours??

As well as her Clerk's duties Pam is involved personally in the group that is taking forward Community and Neighbourhood items from the Parish Plan and which has produced the Information Pack.

Pam first became a councillor to work for the village and that is still what drives her; I think her motto is 'It's always going to be better tomorrow'.



INTERNET ACCESS. A leaflet was delivered to all homes in July. There are 4 computers with internet access in the Church Room; they are available for public use. You can also do word processing (typing) and send/receive emails. Hopefully there will be some training sessions for those who are terrified of computers or those who just need a bit of help. Sessions are currently Mondays 9.00 - 11.00 and Thursdays 11.00 - 13.00. There is a session for the youth group Wednesdays 19.15 - 21.00. For more information or to offer help contact John Griffin 454653 or johngriffin@bigfoot.com.

Thanks to good weather and a record attendance the church fete raised over £2,000 and a good time was had by all. Thank you to all who helped and all who visited.

CONSERVATION AREAS

According to a leaflet produced by North Dorset District Council, a conservation area can be defined as 'an area of special architectural or historical interest, the character or appearance of which it is desirable to preserve or enhance'.

North Dorset currently has 45 Conservation Areas.

Part of Charlton Marshall is a Conservation Area. You can see where the boundaries are on the map in your Parish Plan booklet, or on the Parish Council notice board in the Church Room.

If you live in the Conservation Area some of the situations to which extra rules apply are demolition of buildings, extensions, dormer windows, satellite dishes, cladding, and tree surgery.

For more information visit www.north-dorset.gov.uk.

Highlights from recent Parish Council Meetings

May

- Village logo will be used on all correspondence from the Council

June

- The 'springy horse' in the play area needs replacing
- Shapwick PC promised to support any action taken re anticipated closure of Post Office
- Letter sent to BT objecting to planned removal of payphone at Parva Cottages

July

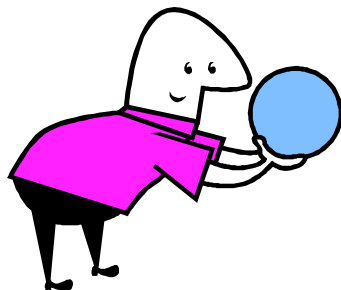
- Open forum suggested possible 'Neighbourcare' scheme be run between Charlton, Spetisbury and Blandford St Mary.
- Meeting to be arranged with parents/guardians to discuss future of youth bus.
- Spetisbury PC promised to support any action taken re closure of PO and removal of payphone.

.....
A network of Parish Transport Representatives serves most of the rural County providing a link with the community on transport matters.

A local person, usually a bus user, volunteers to act as the first point of contact to express consumer views to the County Council.

People wishing to use a service for the first time or experiencing difficulties can also approach the Parish Transport Representative who will try to assist or will explain who to contact for information.

We don't have a Transport Rep. Could you be one for us?



.....
SHROTON SHORT MAT BOWLS meets in our Village Hall every Tuesday 2.00pm to 4.30pm and Friday 7.00pm to 9.45pm. There are currently 39 members; the club is allowed a maximum of 45 so there are 6 vacancies at present.

Why Shroton? Because that's where the club started, then it moved to Iwerne Minster before coming to Charlton Marshall about seven years ago where some of the members came from. We've kept the name of Shroton because to change it would be too costly.

We play in the Blackmore Vale division 2 and 5, and in the Dorset league division 2. The Blackmore Vale team has six players and the Dorset team has seven players. We also play friendly matches against other clubs and touring teams.

If you would like to join us or have more information, contact Peter Coombes 01258 454315.

.....
The annual Christian Aid Week collection raised £717 for relief and development abroad; an increase from the village of £130 on last year. Thank you.

.....
Our acknowledgement that it was working, clearly frightened the VAS by the church - it stopped working again just as our May newsletter was delivered and as far as we can see at the time of writing it is still very sick.

**Charlton
Marshall
History
Project**
Putting together
our story

At the talk in July we discovered that there had been two manors, or possibly three, in Charlton Marshall. Some of the families associated with them were, Marshall, Brune, Bankes, Wake, Hopegood, White, and Bastard. The manor of Charlton Parva was held for a considerable period by Eton College.

It is quite likely that the deeds of some properties in the parish include reference to one or more of the above; if so, I would be very pleased to hear from you because it would help to confirm the extent of each manor.

I'm doing another talk on August 20th 7.30pm in the church, entitled 'The Newfoundland Connection'. Mark Churchill.

THE POST OFFICE

After all we've heard about Post Office closures in other places it came as absolutely no surprise at all to find that ours was on the list for closure published on July 15th. The only question is what are we going to do about it? By the time you are reading this all sorts of things may be happening but be aware that the period for making your voice heard ends on 1st September.

You can write to Freepost Consultation Team or you can email consultation@postoffice.co.uk.

For more information there is a Customer Helpline 08457 22 33 44, a Textphone 08457 22 33 55 and a website www.postoffice.co.uk.

For all sorts of reasons the numbers using post office counter services are declining but they are still essential to a proportion of the population and should be available with reasonable ease.

Inevitably it is often the older members of the community who value these services most, but not exclusively. Is it sensible to suggest that we go by bus into Blandford - have they considered the distance from the bus stop to the PO and the fact that it is quite steeply uphill?

Is it sensible in this day and age to be encouraging us to go to the PO by car or to go a longer distance by car than we do at present. The idea that Pimperne could be a suitable alternative was clearly drawn up by someone sitting in an office looking at a map, not someone who knows anything at all about the area. What about the other suggested alternatives - Stourpaine, Sturminster Marshall or Hilton? How many of you actually know where Hilton is?

You may not be a regular user of Charlton Marshall Post Office but consider raising your voice for the sake of those who are. Stamps can be bought in lots of shops, banking through the PO is often convenient but not essential, and the same goes for buying foreign currency. Cards and stationery are helpfully stocked at the PO but can be bought elsewhere, but how do you post a parcel except at the PO or who will check and price your oversize envelope? And if you've always used the PO for your pension or allowance you won't want to change now, will you?

SUPPORT THE PUBLIC MEETING 7.30PM TUESDAY 19th AUGUST IN THE CHURCH ROOM / POST OFFICE

.....
Services and other activities related to the village church can be found at www.achurchnearyou.com.

.....
TRAILWAY EXTENSION. Contrary to our report last time, work did not start in May but we see it has now begun. Will it be finished by the time you receive this newsletter?