



Information

Produced and published by
Charlton Marshall Parish Council
Distributed to every home and business in the parish
Summer 2024

Welcome to Charlton Marshall Village and Parish

I am pleased to introduce and commend to you the second edition of our Information booklet. I hope you will find it useful.

If you are a new resident I hope it will help you settle in to the village and find out what is going on. For others, maybe it will introduce you to things you didn't know about.

Even with new technology, internet, apps on mobile phones etc. it is still often useful and convenient to have a hard copy of information – kept in the car maybe, or by the phone at home.

Do use the booklet to find out about what events in the village may be of interest to you. I would encourage you to look at the events and clubs and get involved, you will then come to see what a very friendly and enjoyable village Charlton Marshall is, with lovely residents.

Our Village Hall is the envy of many local villages, an excellent facility, with a lot going on. Please use it and the Parish Centre too.

Do look especially at the important contact details for doctors, utility providers etc. also local and Dorset Council phone numbers, and email addresses where provided.

Lastly, having lived in the village for 25 years I can truly say that it is a joy and a privilege to live in such a beautiful village.

Barrie Cooper, Chairperson, Charlton Marshall Parish Council.



Charlton Marshall Parish Council

www.charltonmarshall.org.uk

email: charltonmarshall@dorset-aptc.gov.uk

Clerk to the Council: Jane Mann Tel 01258 452800

The Parish Council meets on the first Tuesday of the month in the Parish Centre. Members of the public are welcome to attend; there is an Open Forum at the beginning of the meeting when parishioners can ask questions and raise concerns about the Parish.

The Council also arranges a Parish Meeting in the spring with key speakers from the local and wider community. There is opportunity to ask questions and cheques are presented to the recipients of the Community Benefit Fund for the current year.

The Council publishes a quarterly Newsletter, maintains the website and has information boards outside the Parish Centre and Village Hall.

Dorset Council is a Unitary Authority

<https://www.dorsetcouncil.gov.uk/home> 01305 221000

Charlton Marshall is in the Winterborne North Electoral Ward in the North Dorset Administrative Area

Our Councillor is Barrie Cooper: Tel 01258 450420

email: cllrbarrie.cooper@dorsetcouncil.gov.uk

Many services, e.g. refuse collection, recycling, Council Tax, schools, planning, benefits and social services, reporting potholes or other highway issues can be accessed directly on the website. If you do not have online access you can use the Online Centre at the Parish Centre.

Direct phone lines for some key departments, Highways 01305 221020, Council Tax 01305 211970, Planning 01305 838336, Refuse collection, recycling, etc. 01305 221040

National Government

We are in the North Dorset Parliamentary Constituency and our Member of Parliament is Simon Hoare. Constituency Office: 01258

452585 or at Westminster: 020 7219 2787, email:

simon.hoare.mp@parliament.uk

QEII Playing Field, Hopegood Close

The playing field off Hopegood Close (and the dedicated car park for Playing Field and Trailway users only) is owned and maintained and regularly inspected by the Parish Council. There is fitness equipment, children's play park and football nets. The field gained QEII Fields in Trust status as part of the Queens Diamond Jubilee celebrations in 2012.

The North Dorset Trailway

The Trailway is owned and managed by Dorset Council. There are now seven access points from the village on to the trailway – Hopegood Close (by the Playing Field), Charlton Mead (turn left after No 15), Church Lane, Cereleton Park via Woodland Trust area, Park Hill, Charlton on the Hill, and from the A350 opposite Jubilee Green.

The Trailway follows the route of the former Somerset and Dorset Joint Railway which closed to traffic in 1966. It is suitable for walking, cycling and horse riding, and runs from Louse Lane in Spetisbury to Ward's Drove in Blandford St Mary. You can re-join the trailway and follow it to Sturminster Newton at the site of the former station, off Damory Court Street in Blandford (or at The Milldown if you need car parking). At Blandford St Mary, Spetisbury and Sturminster Newton you can join other footpaths and bridleways. See www.northdorsettrailway.org.uk

Dog waste bins

- On Park Hill by access to trailway
- On Church Lane by access to trailway
- In Hopegood Close by access to trailway near play area
- On Gravel Lane near Barnwheel
- On Bournemouth Road – opposite Meadow Road, near the church, and by the bus stop at the bottom of Park Hill

Other Amenities and Assets

The Parish Council owns and maintains the Riverside Gardens behind the church, the Village Garden by the river in Gravel Lane, the two red telephone kiosks (at Thornicombe and at Parva Cottages on the A350) and the cemetery in Church Lane. There is a defibrillator Outside The Village Hall main entrance.

The Parish Church of St Mary the Virgin

Bournemouth Road

Rector: Rev Carolyn Couzens 01258 858353
email: revcarolyncouzens@gmail.com

Licensed Lay Minister: Jane Griffin 01258 454653

Email: janegriffin@sky.com

Church Wardens: Françoise Witheridge 01258
email: francoisewitheridge@gmail.com
Robin Turnbull (deputy) 07715 486798
email: robin.turnbull@gmail.com

Benefice Administrator: 07842 182353, tworiverschurches@gmail.com



Sunday services are advertised on the notice boards outside the church and in the Parish Centre, see also www.achurchnearyou.com, Three Villages News or on Facebook at 'Churches in The Two Rivers Benefice, Dorset'. Generally we have two Sunday services each month at 9.30 am: a communion service and a family service. However, many members also attend other churches in our Benefice on the other Sundays.

The church is part of the Two Rivers Benefice – a group of parishes comprising Blandford St Mary, Charlton Marshall, Spetisbury, Langton Long, Tarrant Keyneston, Tarrant Rushton and Tarrant Crawford. Everyone is welcome at all of the services in any church.

The church community is drawn from varying Christian traditions and in addition to the regular services, home groups, occasional children's activities, a seasonal choir and various social and fundraising activities take place.

The church building is Grade 1 listed. There has probably been a church on the site since Saxon times but the main part of the present building dates from 1713; the tower is mediaeval with additions made in 1713. Considerable restoration work took place in 1895 and in the late 20th century, with kitchen and toilet added more recently. There is also a sound system and hearing loop which have recently been upgraded with help from the Community Benefit Fund.



Charlton Marshall Village Hall

Charity no: 1191957

Our bright and airy hall opened in 2019 and offers villagers and members of the wider community a great facility for concerts, community group meetings, talks and family events. The hall is fully accessible with parking for 25 cars.



WEEKLY ACTIVITIES IN MAIN HALL and meeting room

MONDAY	Evening: Scouting Cubs (school termtime only)
TUESDAY	Morning: Pilates Afternoon: Charlton Marshall Short Mat Bowls Club Evening: Charlton Marshall Short Mat Bowls Club
WEDNESDAY	Morning: Mandala Yoga Morning: Art Group (meeting room) Evening: 2 nd Wednesday of month – Film Night
THURSDAY	Morning: Fit 4 Life Afternoon: Quilt Therapy (meeting room) Afternoon: Starlight Dance Academy (school termtime) Evening: Pilates
FRIDAY	Morning: Tai Chi Evening: Scouting Beavers (school termtime only) Evening: Charlton Marshall Short Mat Bowls Club
SUNDAY	Evening: alternate weeks – Tai Chi

For full details on times and contacts for weekly activity groups, please visit the Village Hall website www.cmvh.org.uk 'What's On' page.

If you wish to make a booking for either the Main Hall or Meeting Room for a weekly activity, business meeting or a family get-together, the website has full details of our facilities and the 'Bookings' page will guide you through making a booking and all you need to know about using the Village Hall.

Charlton Marshall Parish Centre

The Parish Centre is situated at the junction of Bournemouth Road and The Close, behind the Blandford-bound bus stop. Owned by the local church, this is a community space (with WiFi) for the whole village to use, welcoming visitors for coffee four days a week, and available for hire afternoons, evenings and weekends for various activities from craft groups to meetings, memorial lunches to family parties. It will seat approximately 30 people comfortably, has a fully equipped kitchen and accessible toilet, and is available for a small hourly fee.



WEEKLY ACTIVITIES

Tuesday to Friday 10.30am to 12.30pm – Coffee Stop: run by local volunteers and offering drinks and a chat, browse the second-hand books and jigsaw puzzles, or choose a homemade cake, jam or chutneys, plus stamps and greeting cards. Children and well behaved and clean dogs welcomed.



Thursdays 2.00pm to 4.00pm – Art & Craft Group.

MONTHLY ACTIVITIES

First Friday 1.00pm – Lunch Club: if you, or someone you know, would like to join other villagers and enjoy a freshly cooked lunch for a small charge, contact Tina Potter for full details of dates and times on tel. 01258 452380

First Tuesday 7.30pm Parish Council monthly meeting

NEED TECHNOLOGY HELP?

Help with computers, laptops and smartphones is available during Coffee Stop hours by appointment (donations welcome). Tel Paul on 07752 138300

For more information on any of the Parish Centre activities or to book the facility for a private function, please come in during Coffee Stop hours for full details.

My Notes



A circular walk through Tarrant Crawford

About 5 miles - 3 hours and varied scenery, mostly on the level. Parts can be muddy in wet weather.

Walk along the trailway for a pleasant mile towards Spetisbury . On your right you get a glimpse of the watercress beds. On your left you will then see Spetisbury School & Church. Before the school, turn left down the slope to the road. Turn right, along the road, and cross straight over the A350, with care. You are on part of the Stour Valley Way.

Through Clapcott's Farm follow the footpath signs, to the left of the private garage, over the raised narrow footbridge (over the gardens of "Mill House" - quite a sight in any season). Then pass close by the Mill, over the millpond, & through a number of iron gates.

After the iron gates the meadows of the flood plain open out; head straight across to two bridges to cross the River Stour before passing the buildings of Keynston Mill. Opposite the disused farm shop, turn right into a field and follow the right-hand boundary through into a second field. The path bears left to reach a metal gate and road; the Tarrant stream is on your right.

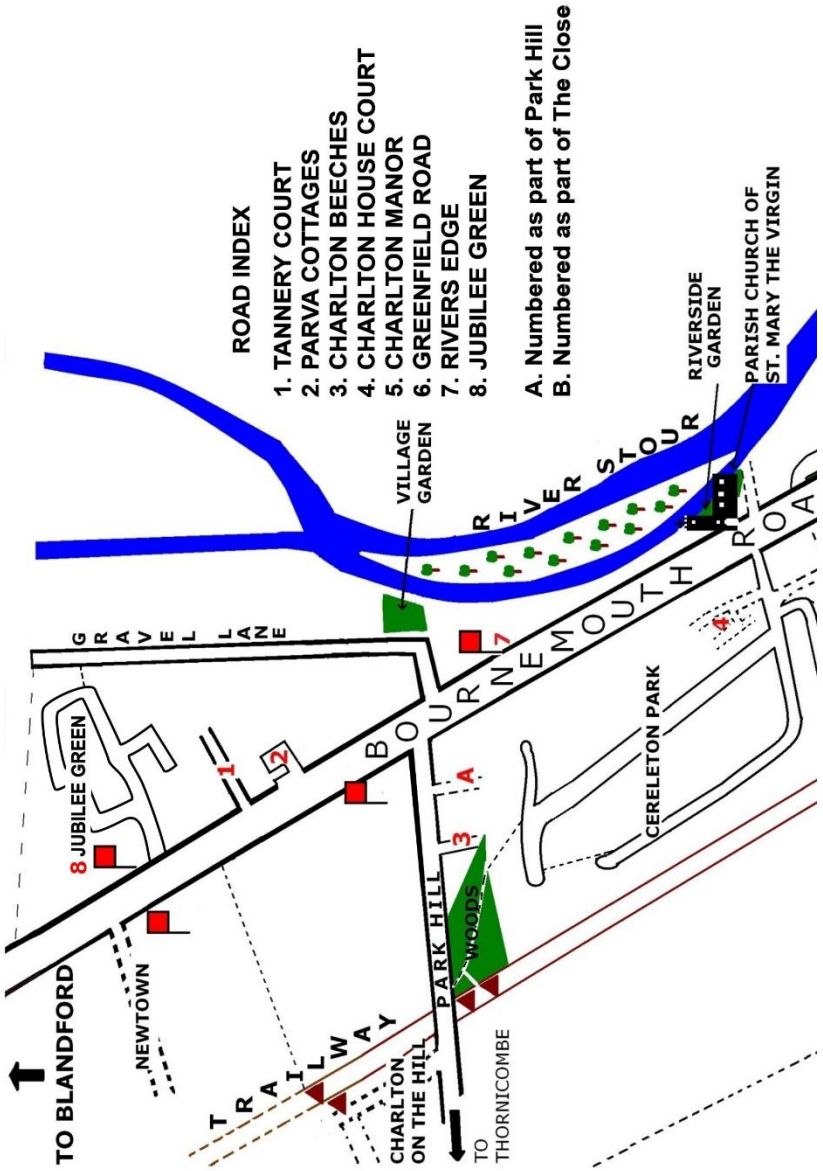
Cross the road into a paved track that brings you to Tarrant Crawford Church (13th C.) with its mediaeval wall paintings; it is well worth the time to walk across the old churchyard and experience a place to meditate, and step back in time! When you come out turn left towards the old buildings of the Abbey Farm and in a few metres go left over a stile into a field to walk uphill and come out again on the road just north of Crawford Farm.

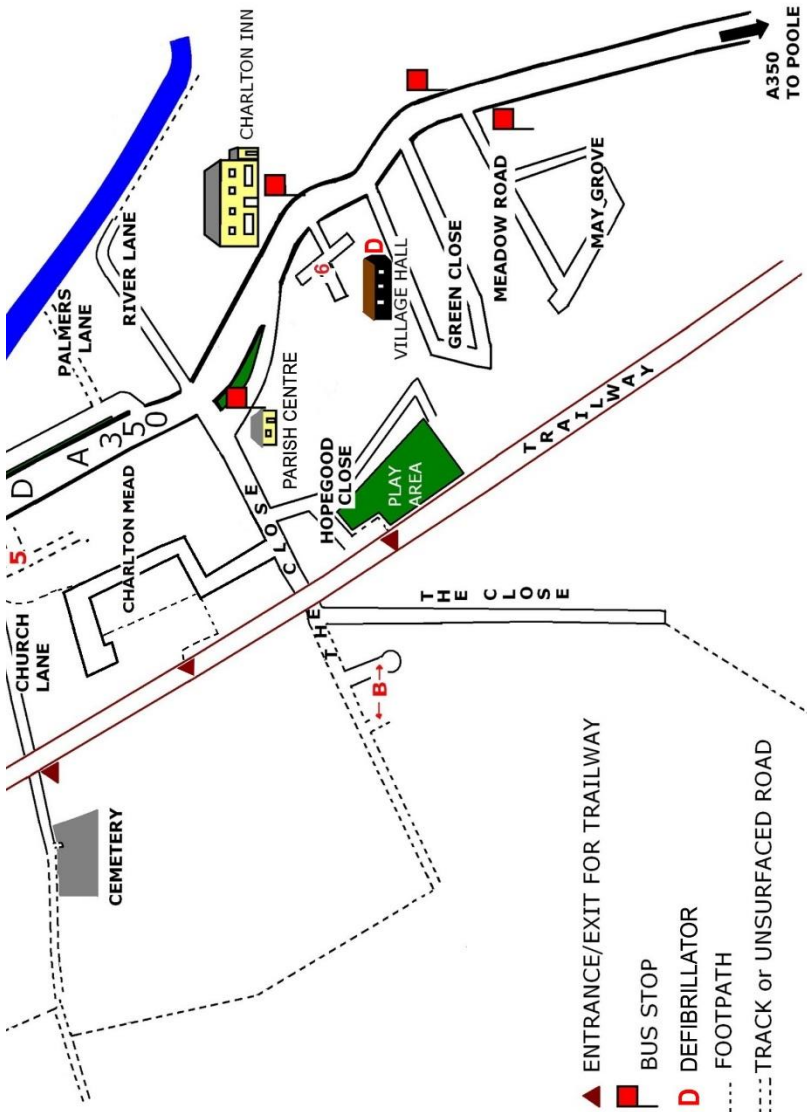
Cross the road, go through a gate keeping straight ahead along the edge of two fields. Cross a concrete track (access to local sewage farm, but don't let that put you off). Pass under the overhead power lines, and over a stile. Follow the blue arrow sign around the field until you reach a road. Turn right and follow the road to cross the River Stour by the Crawford Bridge

Walk up to the crossroads, and cross the main A350 with care, and continue up the road opposite (Louse Lane) for about 50 metres to a gravel track on the right. This is the start of the trailway back to Charlton Marshall.

CHARLTON MARSHALL

Village Centre





- ▲ ENTRANCE/EXIT FOR TRAILWAY
- BUS STOP
- D DEFIBRILLATOR
- FOOTPATH
- TRACK or UNSURFACED ROAD

Representational only and not to scale

A walk on the railway and across farmland to the west

About 4 miles - 1½hours and varied scenery, mostly on the level.

Walk along the railway towards Blandford. When you get to the T junction at Blandford St Mary (Ward's Drove) turn left up the drove and go over the hill as far as the cottages on the left in the valley. Beyond the cottages turn left into the bridleway; when you get to the farm, bear right through the yard and continue to the T junction at Littleton Drove, which is tarred. Go left for a few yards until you find a field gate on your right. Go through the field gate and the footpath goes straight across the field to the gap in the hedge on the far side. Continue across the second field heading for the corner of the wall at the rear of Birch Close Farm. Walk out on to Park Hill, cross it and continue down the lane opposite, heading for Lower Cottage, which you will pass on your right just before you reach a T junction. (which can be very muddy after rain). Turn left up the track, go over the hill and come down Church Lane to Charlton Marshall. Happy walking.

A walk through Manor Farm and Glebe Farm

Up to 3½miles - 1½hours and varied scenery, some hilly stretches.

Go up Church Lane, over the top of the hill and down towards Manor Farm until you come to a field gate on the left before reaching the farm; go through the gate on the bridleway across the field to the far left corner. Go through the gate in the corner and turn left towards Glebe Farm; go straight across the field towards the farm buildings (can be very muddy here), pass them and the next house and bungalow on your left and continue until the lane bends to the right. Now choose either a or b:

a) continue on the lane to the T junction, turn left and walk towards Spetisbury; go under the railway arch and turn immediately right up the slope to the railway and return to Charlton Marshall.

b) Go through the field gate on the left and head for the tree in the centre, turn left at the tree and when you get to the corner of the field go over the stile, then across to the next stile, then diagonally up the hill to the stile in the far hedge; head for the farm buildings; go through the gate into the yard and out at the far left corner into The Close, and home.

The Charlton Inn, Bournemouth Road

Food and drink seven days a week. Bed and Breakfast. 01258 453160
www.thecharltoninn.co.uk, email: charltoninn@gmail.com

Letter Boxes

On Bournemouth Road at Parva Cottages, at Parish Centre, at Meadow Road junction and at Thornicombe just before the junction with Dorchester Road.

Post Offices

Blandford, The Tabernacle: 0845 722 334

Sturminster Marshall, 66 High Street: 01258 858314

Schools and pre-school

(for admissions information see www.dorsetforyou.gov.uk)

Spetisbury Primary: 01258 452107

Blandford St Mary Primary: 01258 453331

Milldown Primary, Blandford: 01258 452456

Archbishop Wake Primary, Blandford: 01258453120

The Blandford School (Secondary): 01258 451121

Pre School – Scamps (at Spetisbury School): 01258 451413
www.scampspreshool.org

Parent and Toddler Group – Scampies see Scamps

Breakfast and After School – Treehouse Club see Scamps

Deliveries to the Village

Milk&More, Poole (Muller, was Dairy Crest): 0345 606 3606
www.milkandmore.co.uk

Newspapers, News Team Group. 01782 358998
www.newsteamgroup.co.uk email admin@newsteamgroup.co.uk

Blandford Information Centre (West Street)

The Information Centre stocks Ordnance Survey map 118 (which covers our village and surrounding area), they also have information about the Trailway, local places to see and visit, Blandford maps and bus and train information. Ordnance survey maps can also be purchased from Bookshops and online.

Library

The Tabernacle, Blandford, DT11 7DW, 01258 452075

www.blandfordlibrary@dorsetcouncil.gov.uk

Buses/community transport

Morebus (formerly Wilts and Dorset): 01202 338420 www.morebus.co.uk

Damory Coaches: 01258 452545, 01202 338420 www.damory.co.uk

Dorset Community Transport (Dorset Plusbus): 01258 287980

www.dorsetforyou.gov.uk/travel-dorset/bus/community-transport

Friends of Blandford Hospital: minibus for shopping and days out. Also voluntary car scheme for medical appointments (for this you must be referred by your GP): 01258 450095 www.friendsofblandford.org.uk

National Express Coaches: 0871 781 8181 www.nationalexpress.com

Nordcat (North Dorset Community Accessible Transport): 01258 472164

Taxis in Blandford

Blandford Taxis: 01258 410021

Kens Kabs: 01258 456136

Oakwood Taxis: 01258 455555

Prime Cabs: 01258 878787

Riverside Taxis: 01258 453553

Roy's Taxis: 07900 605383

Trains

Railway stations: Poole, Bournemouth, Salisbury, Dorchester, Gillingham

National Rail Enquiries: 0345 748 4950. www.nationalrail.co.uk

Airports

Bournemouth International: 01202 364000 www.bournemouthairport.com

Southampton: 0344 481 7777 www.southamptonairport.com

Bristol: 0871 334 4444 www.bristolairport.co.uk

Exeter International: 01392 367433 www.exeter-airport.co.uk

Hospitals

Blandford Community Hospital, Milldown Road, DT11 7SH. No A&E but has Minor Injuries Unit (MIU) and hosts various outpatient clinics etc: 01258 456541. Friends of Blandford Hospital: 01258 450095

Dorset County Hospital, Williams Avenue, Dorchester, DT1 2JY:
01305 251150 www.dchft.nhs.uk

Poole Hospital, Longfleet Road, BH15 2 JB:
01202 665511 www.uhd.nhs.uk/hospitals-poole

Royal Bournemouth Hospital, Castle Lane East, BH7 7DW:
01202 303626 www.uhd.nhs.uk/hospitals-bournemouth

Salisbury District Hospital, Odstock Road, SP2 8BJ:
01722 336262 www.salisbury.nhs.uk

Doctors' Surgeries and Pharmacies

Blandford Group Practice, WhiteCliff Mill Street, and Child Okeford.
Includes in-house pharmacies:

01258 452501 www.theblandfordgrouppractice.co.uk

Boots, Blandford.

10-14 Salisbury Street: 01258 452824

Blandford Pharmacy

45 East Street: 01258 503329

Wellbeing Pharmacy, 66 High Street, Sturminster Marshall: 01258 857657

Veterinary Surgeons in Blandford

Damory Veterinary Clinic, Damory Court Street: 01258 452626
www.damoryvets.co.uk

Friars Moor Vets, Higher Shaftesbury Road: 01258 472160
www.friarsmoorvets.co.uk

Christian Churches in Blandford

Parish Church: 01258 456260

<https://www.bfpc.org.uk/>

Catholic Church: Whitecliff Mill Street, Blandford, 01258 452051

<https://blandfordcatholics.org/>

Evangelical Church: Albert Street, Blandford, 01258 450689

<https://www.becbygrace.com/>

Methodist Church: The Close, Blandford, 07799 516735

<https://www.candwmc.org.uk/churches/blandford.html>

United Reformed Church: Salisbury Street, Blandford, 01202 698638

<https://www.blandfordurc.com/>

Other local amenities and information

Blandford Leisure Centre, Milldown Road: 01258 455566.

<https://www.everyoneactive.com/centre/blandford-leisure-centre/>

Blandford Skate Park, Stour Meadows (Town Council): 01258 454500

<https://blandfordforum-tc.gov.uk/>

Blandford Fashion Museum, The Plocks: 01258 453006

<https://blandfordfashionmuseum.co.uk/home/>

Blandford Town Museum, Bere's Yard: 01258 450388

<https://blandfordtownmuseum.org.uk/>

Nourish (Blandford Food Bank+) includes finance and debt advice etc,
URC, Whitecliff Mill Street: 01258 456093

The Royal Signals Museum, Blandford Camp: 01258 482248

<https://www.royalsignalsmuseum.co.uk>

Blandford Market every Thursday and Saturday (Town Council):

01258 454500 <https://blandfordforum-tc.gov.uk/>

Blandford Farmers Market every Sunday: 07739 048640

Blandford Information Centre, West Street: 01258 454770

<https://www.blandfordinfocentre.uk/>

In and around Blandford you will also find other sports and fitness clubs and facilities, opticians, dentists, solicitors, undertakers, banks, supermarkets, chain stores, DIY suppliers, small individual shops, eating places and pubs, hairdressers, travel agents and other service providers to name just a few.

The following are some businesses based in the Parish that responded to the invitation to be listed in this publication. The Parish Council cannot recommend or endorse a business.

Gorcombe Extreme Sports, <https://www.gorcombe.co.uk/> 01258 452219

Graham Smith, Dorset Weathervanes,
<https://www.weathervanes-direct.co.uk/> 01258 450193

Honeybee Trees, tree surgery, felling, pruning, hedge cutting and log splitting, 01258 454710

Hunie Beauty, nails, lashes, brows, Francesca, huniebeauty@gmail.com
07493 886492

Jo D Designs, architectural design, planning and building regulations drawings and applications, Jo Kempster, jodd designs@hotmail.com
01258 721347, 07703 034127,

Paul Hutchings, Media Manor, Tuition and repair for PCs, mobile phones, laptops and tablets, <https://mediamanor.com/>
Paul@MediaManor.com 07752 138300

St Mary Services, Complete landscape service,
<https://www.st-marys-services.co.uk/> 01258 451333, 07980 590710

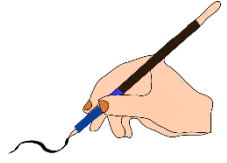
Sue Hutchings, Owl and Brolly, Designer Wall Stickers and Décor,
<https://owlandbrolly.com/> contact Sue@OwlAndBrolly.com

Travel by Nicky, bespoke travel planner, for all your travel adventures, Nicky Harris, <https://www.facebook.com/travelbynicky>
nicky.lewis@travelbynicky.co.uk 01258 721673, 07472 857924,

Wellies Walkies, dog walking, dog boarding and cat care, Tracy,
<https://www.wellieswalkies.co.uk> info@wellieswalkies.co.uk

If you have a business based in the Parish and would like to be listed in any future revision please contact the Parish Clerk.

My notes



Useful Contacts

Action Fraud: 0300 1232040 <https://www.actionfraud.police.uk/>

Alcoholics Anonymous: 0800 917 7650

Bank fraud helpline: 159

Citizens Advice: 0800 144 8848 <https://www.citizensadvice.org.uk/>
<https://centraldorsetca.org.uk/contact-gillingham>

Crimestoppers: 0800 555111 <https://crimestoppers-uk.org/>

Cruse Bereavement (helpline offering emotional support) 0808 808 1677

Galop (support for LGBT+ people who have experienced abuse and violence) 0800 999 5428 <https://galop.org.uk/get-help/helplines/>

JobCentrePlus, Blandford: 0800 169 0190 <https://www.gov.uk/contact-jobcentre-plus>

Medical or Health advice and information – non urgent: 111 <https://111.nhs.uk/>

Mens Respect (for male victims of Domestic Abuse): 0808 801 0327

Narcotics Anonymous (personal drug problems) 0300 999 1212

Police non emergency: 101, email: 101@dorset.pnn.police.uk

Rape Crisis (confidential support and information): 0808 802 9999

Shelter (housing issues and homelessness): 0808 800 4444
<https://www.shelter.org.uk/>

Victim Support: 0808 168 91111

Wessex Water main number 24/7: 0345 6004600

Womans Refuge 24/7 Domestic Abuse helpline: 0800 200 0247

Emergency Contacts

Childline: 116 111 or 0800 1111

Doctor out-of-hours: 111 <https://111.nhs.uk>

Electrician 24/7: 0115 671 3528

Electricity: to report or get information about a power cut: 105

Flooding 24/7: 0345 988 1188 <https://swim.geowessex.com/glos/>

Gas escape, Smell Gas?: 0800 111999

Medical emergency: 999

Missing person: 116 000

NHS Connection: 24/7 helpline for Dorset residents of all ages if concerned for your own or others' mental health: 0800 652 0190

Plumber 24/7: 07876 471846, 03330 882552 <https://sanisolutions.co.uk/>

Police, Fire and Rescue, Ambulance – emergency: 999

Samaritans: 116 123

Sewage overflow: 0345 850 5959

Water-main leakage: 0800 692 0692

The information in this booklet is believed to be correct at time of publication. However, if you find any errors or if there is information you think should be added, please let the Clerk know. Updates will be advised via the quarterly Parish Council Newsletter.

The Parish Council thank the Ranmoor Estate for funding the printing of this community information booklet.

